

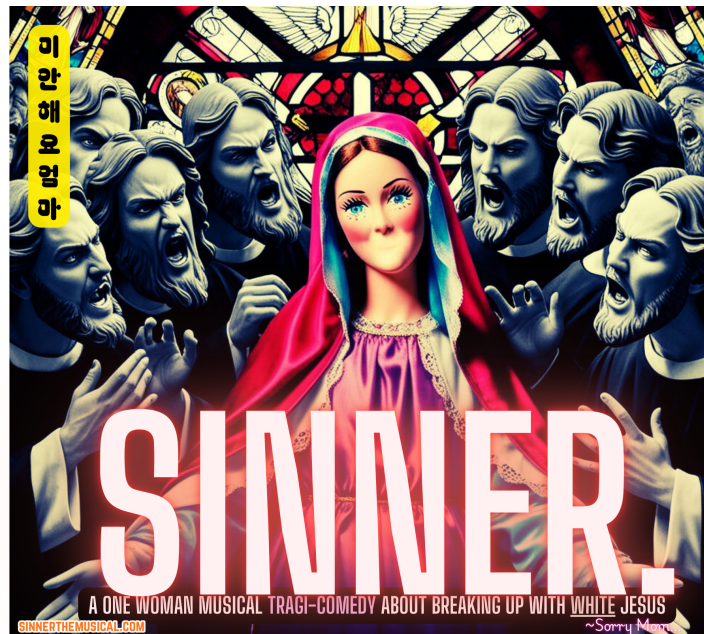
TORONTO FRINGE

FESTIVAL

SINNER.

A One Woman Tragicomedy About Breaking Up With White Jesus

Access Guide



July 2–13, 2026
Theatre Passe Muraille
Toronto Fringe Festival

This guide uses plain language to provide audiences, particularly neurodiverse audiences, with specific sensory details of the performance in advance to help guide your experience.

TABLE OF CONTENTS

About **SINNER**.
Run Time
Content Warnings and Advisories
Cast and Characters
Set
Costumes
Get in Touch

ABOUT **SINNER.**

SINNER. is a one-woman musical tragicomedy created and performed by Marla Torgerson.

Through storytelling, comedy, and original songs, Marla shares the story of growing up in the Alberta Bible Belt and trying to make sense of faith, family, sexuality, and identity. The show moves between humour and emotional reflection. Marla performs multiple characters from her life including family members, pastors, teachers, and younger versions of herself. The performance combines live music, storytelling, theatrical monologues, and comedy. The tone shifts between satire, vulnerability, and emotional catharsis.

RUN TIME

90 minutes with no intermission.

CONTENT WARNINGS AND ADVISORIES

SINNER. includes discussion of:

- religious trauma and fundamentalist Christianity
- purity culture
- family conflict
- sexuality and identity
- emotional distress
- church teachings and religious authority used in satirical ways

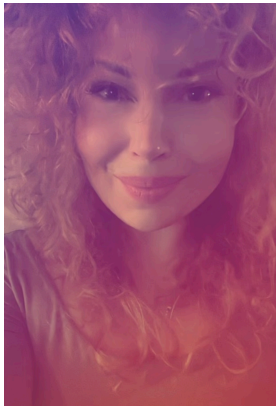
The show contains strong language and adult themes.
Some moments may be emotionally intense.

The performance also includes:

- live singing
- amplified sound and music
- moments of darkness between scenes
- comedic audience interaction

There are no strobe lights or sudden loud sound effects.

CAST AND CHARACTERS



MARLA TORGERSON performs all roles in SINNER.

Throughout the performance she portrays multiple characters from her life, including:

- her younger self
- family members
- pastors and church leaders
- teachers and authority figures
- people she encountered while growing up in evangelical culture

Characters are created through changes in voice, posture, and storytelling rather than large costume changes.

SET

The stage is simple and uncluttered.

The set includes:

- a microphone on a stand
- a keyboard or piano
- a stool or chair
- minimal stage furniture

Projected images or slides appear behind the performer during the show.

Lighting is focused primarily on the performer, with shifts in colour and brightness to reflect different emotional moments.

There are no large moving set pieces.

COSTUMES

Marla Torgerson wears a single primary costume throughout most of the show, changes to something more colourful and free near the end.

The costume is performance attire suitable for singing and storytelling.
Small costume elements may be added briefly to suggest different characters.
Costume changes are minimal and happen on stage in view of the audience, with no nudity.

GET IN TOUCH

If you have any questions or concerns about this access guide or planning your visit to SINNER. at the Toronto Fringe Festival, please reach out.

Marla Torgerson
Creator and Performer
Email: sinnerthemusical@gmail.com

If you want to tell the Fringe about your experience or have feedback that you would like to share, you can call, write, or send an email to the Fringe.

Our address is:
100 Broadview Avenue, Suite 400
Toronto, ON
M4M 3H3

Our email address is:
[\[access@fringetoronto.com\]](mailto:access@fringetoronto.com)(mailto:access@fringetoronto.com)

Our phone number is:
416-966-1062

Thank you for coming to the Toronto Fringe Festival.