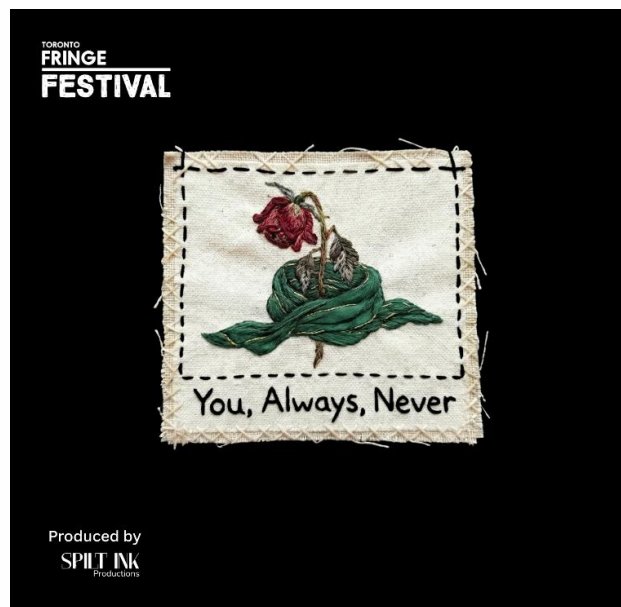


TORONTO
FRINGE
FESTIVAL

You, Always, Never Access Guide



June 30 - July 12, 2026
Presented in Native Earth's Aki Studios

This guide uses plain language to provide audiences, particularly neurodiverse audiences, with specific sensory details of programming in advance to help guide your experience.

Table of Contents

Access Measures	3
About You, Always, Never	3
Run Time	3
Content Warnings and Advisories	3
Cast and Characters	4
Set	5
Costumes	6
Get in Touch	7

Access Measures

No access measures will be provided for any performances of *You, Always, Never*

About *You, Always, Never*

You, Always, Never is an intimate two-hander that follows Kaushi and Krish as they reconnect after decades apart, revisiting memories that blur the line between friendship and something unknown. Moving between past and present, the play explores themes of love, death, duty, and the quiet weight of unspoken truths within a relationship. Through humour, poetry, and deeply human moments, it asks what happens to the connections that struggle to be defined by boundaries and how do they shape the lives we choose.

Run Time

60 minutes with no intermission.

Content Warnings and Advisories

Please be advised that *You, Always, Never* includes adult language.

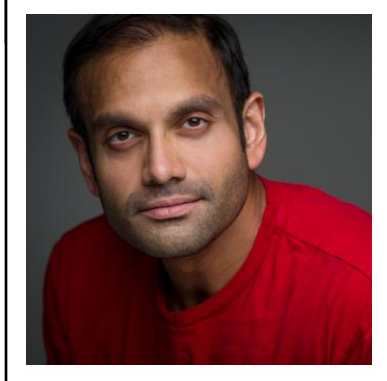
Cast and Characters



Sahana Srikandarajah plays the role of Young Kaushi.



Sumathy Balaram plays the role of Kaushi.



Iqbal Fazier plays the role of Krish.



Shakir Qadri plays the role of Young Krish.



Parisa Tootazehi plays the role of The Poet.

Set

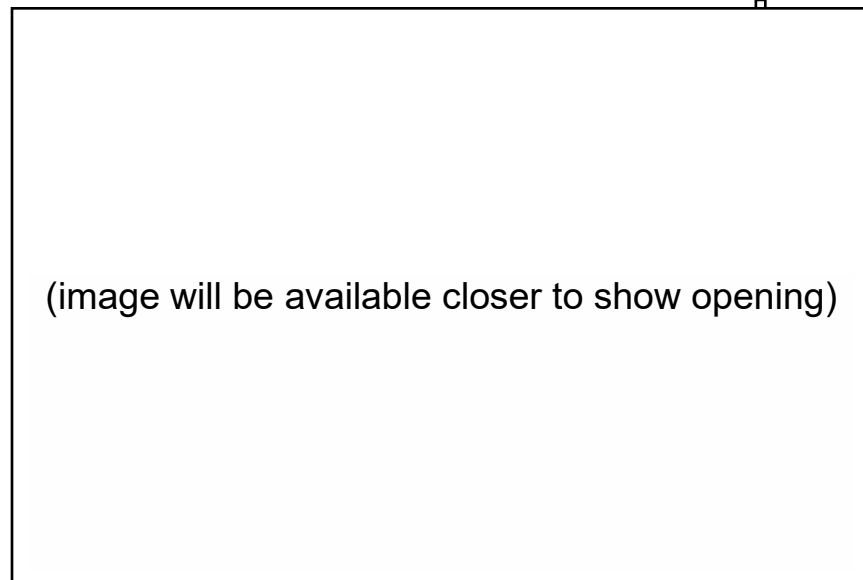
During Act 1, the set will include two chairs in the centre of the stage and transitions into “countryside”, which is depicted using a bus stop sign and two patches of tall grass

During Act 2, the set will include two chairs in the centre of the stage and will transition to a “newly moved-in home,” depicted with 5 boxes, a rug, and two cushions. Additionally, two empty paint cans and paint brushes are used

During Act 3, the set will include two chairs in the centre of the stage and will transition into two parts. In the foreground, we see a home corridor, depicted with a small shoe cabinet and a coat hanger. The second part in the middle ground depicts a park with a lamp post and blue fabric representing a pond.

(Images will be available closer to show opening)

Costumes



ACT 1,2,3

Krish: Navy suit, collared white shirt, pattern tie, glasses

Kaushi: Black midi dress, green scarf, black flats, black cardigan, hair in a low bun with a white rose and glasses

Act 1

Young Kaushi: summer red dress, denim jacket, black boots

Younger Krish: Printed flowy collared shirt, jeans and white vest

Act 2

Young Kaushi: Graphic t-shirt and casual shorts

Young Krish: Graphic t-shirt and jeans

Act 3

Young Kaushi: Jeans and t-shirt

Young Krish: Plaid shirt, white vest and blue jeans

Get in Touch

If you have any questions or concerns about this access guide or planning your visit to *You, Always, Never* at the 2026 Toronto Fringe Festival, please reach out.

Shakir Qadri

Marketing Manager

Email: shakirqadri@hotmail.com

Phone: 416-318-6237

If you want to tell the Fringe about your experience or have feedback that you would like to share, you can call, write, or send an email to the Fringe.

Our address is:

100 Broadview Avenue, Suite 300

Toronto, ON

M4M 3H3

Our email address is:

access@fringetoronto.com

Our phone number is:

416-966-1062

Thank you for coming to the 2026 Toronto Fringe Festival.