

TORONTO
FRINGE
FESTIVAL

Show Name

Access Guide



July 2-13, 2025
Factory Theatre Mainspace

This guide uses plain language to provide audiences, particularly neurodiverse audiences, with specific sensory details of programming in advance to help guide your experience.

Table of Contents

About Show Name	3
Run Time	4
Content Warnings and Advisories	4
Cast and Characters	5,6
Set	7
Costumes	8
Get in Touch	9

About 1920's Walking Around In A Dream

Summary:

A 1920's musical comedy inspired by A Midsummer Night's Dream. Theseus, Eggs and Hips are running a speakeasy in Chicago during prohibition. Eggs's daughter Hermie, a flapper, has fallen in love with Andy, a young veteran of WWI. Eggs disapproves of the match, and wants Hermie to marry Dimitry, a boxing champ on the path to wealth and fame.

Hermie and Andy make secret plans to run away and elope, confiding in their friend, Helen. Helen, who is in love with Dimitry, breaks the lovers confidence and tells Dimitry of their elopement. Helen, Dimitry, Andy and Hermie get lost in the woods later that night, and their confusion is heightened by the effects of moonshine they have been drinking.

After some silly slapstick, confessions of love to the wrong person, break ups and make ups, the morning arrives. Eggs, Theseus and Hips find the two young couples, who are now paired off in happy couples as Helen with Dimitry and Hermie with Andy. Eggs gives his blessing to Hermie and Andy, and the play ends in celebration.

The play is written in authentic jazz age vernacular, and many of the more mature elements are veiled references using historical euphemisms. The production will include the use of public domain songs from the period with new musical arrangements.

Run Time

60 minutes with no intermission

Content Warnings and Advisories

Please be advised that 1920's Walking Around In A Dream has a PG 13 rating - some material may be inappropriate for children under 13.

The performance includes references to

mature themes (veterans of WWI; bootlegging during prohibition);

includes sex references;

includes smoking (non-flame prop cigarette that remains unlit);

includes brief light comedic slapstick style violence;

drinking alcohol;

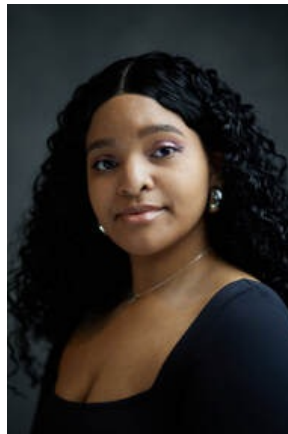
includes one use of explicit language (the word “bitch” but this is a double entendre used to refer to a dog)

Cast and Characters

TOM BEATTIE plays the role of EGGS.



ARI CROOKS plays the role of HELEN.



GARETH FINNIGAN plays the role of ANDY.



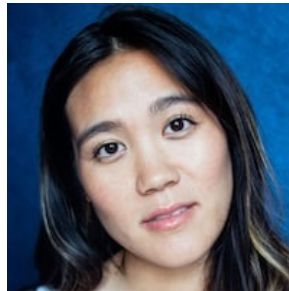
FABIANA MERCURIO plays the role of HIPS.



DAYTONI RAYE plays the role of DIMITRY.



KIMBERLY VAN VO plays the role of HERMIE.



JOSH WELSH plays the role of THOMAS THESEUS.



Set

The set consists of a bar, 3 folding screens, and three chairs. The set represents two environments, a 1920's speakeasy bar, and a forest.

Costumes

The costumes are 1920's historical period. The women wear flapper dresses with hair bands and the men wear suits with fedora hats.



Get in Touch

If you have any questions or concerns about this access guide or planning your visit to 1920's Walking Around In A Dream at the 2026 Toronto Fringe Festival, please reach out.

Contact Name

Producer Nina Kaye

Email: nina_bea@hotmail.com

Phone: 647-770-3837

If you want to tell the Fringe about your experience or have feedback that you would like to share, you can call, write, or send an email to the Fringe.

Our address is:

100 Broadview Avenue, Suite 400

Toronto, ON

M4M 3H3

Our email address is:

access@fringetoronto.com

Our phone number is:

416-966-1062

Thank you for coming to the 2026 Toronto Fringe Festival.