

TORONTO
FRINGE

FESTIVAL

Patient 0: A love story
Access Guide

PATIENTO
A LOVE STORY

June 30 - July 12, 2026
22 : Tarragon Theatre Mainspace

This guide uses plain language to provide audiences, particularly neurodiverse audiences, with specific sensory details of programming in advance to help guide your experience.

Table of Contents

Access Measures

About Patient 0: A love story

Run Time

Content Warnings and Advisories

Cast and Characters

Set

Costumes

Get in Touch

Access Measures

We do not have a

- Relaxed Performance
- Audio Described Performance
- ASL Interpreted Performance
- Tactile Body Immersion (TBI) Chair
- Touch Book

About Patient 0: A love story

Patient 0: A Love Story follows Billy, a ruthless killer trapped in a surreal world shaped by trauma, identity, and regret. As he carries out violent missions alongside his brother Tommy, fragments of truth emerge linking him to a grieving Writer and a lost love. Through encounters with the Writer's Wife, Billy confronts his origins and purpose, realizing he embodies the Writer's pain and guilt. Faced with a final choice, Billy challenges his creator, exposing themes of accountability, loss, and self-destruction. The play ultimately explores how love, regret, and choice define existence—and whether breaking cycles of pain is possible.

Run Time

55 minutes with no intermission

Content Warnings and Advisories

Please be advised that Patient 0: A love story includes/mentions/references/depicts...

abuse (physical, verbal)

child abuse

excessive or gratuitous violence

death and/or dying

miscarriages and/or abortion

Torture

mental illness

discrimination and/or bigotry ableism

drugs/alcohol/substance abuse

Cast and Characters



Malik Suleman plays the role of Billy
(include character description if desired).



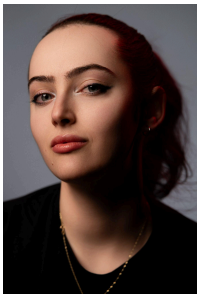
Seth Roy Guillemettes plays the role of Tommy
(include character description if desired).



Christopher Maclean plays the role of Writer, Finley and guy
in Paris
(include character description if desired).



Sharon Rae Ryan plays the role of Wife, understudy for Girl in Paris and spectator
(include character description if desired).



Julia Skutelsky plays the role of Girl in Paris, spectator and understudy for Wife
(include character description if desired).

Set

Paris restaurant:

A small table center stage with a chair on either side. Projection of paris behind.

Finley's apartment

Two chairs up stage left.

Coffee shop
Table center stage with a chair on either side.

Costumes

Tommy's monologue

Table switched with bucket, one chair separate

Museum

Bench up stage center, projection of painting

Writer's apartment

Desk with chair up stage left, single chair down stage left, couch center stage

Costumes

Writer:

Pajama pants, old shirt, slippers

Wife:

White button up shirt, green skirt, black heels, black overcoat

Billy:

Black jeans, dark boots, plain shirt, dark overcoat

Tommy:

Oversized light blue jeans, colourful shirt, bright hat, green jacket, bright shoes

Spectator:
Sweat wear/ pajamas, slippers

Finley:
Jeans, plain shirt

Guy in Paris:
White button up shirt, black shorts, summer shoes

Girl in Paris:

White button up, black pants, black heels

Get in Touch

If you have any questions or concerns about this access guide or planning your visit to Patient 0: A love story at the 2026 Toronto Fringe Festival, please reach out.

Renee Pasher

Stage Manager

Email: renee.pasher.24@gmail.com

Phone: 905-546-7363

If you want to tell the Fringe about your experience or have feedback that you would like to share, you can call, write, or send an email to the Fringe.

Our address is:

100 Broadview Avenue, Suite 300

Toronto, ON

M4M 3H3

Our email address is:

access@fringetoronto.com

Our phone number is:

416-966-1062

Thank you for coming to the 2026 Toronto Fringe Festival.