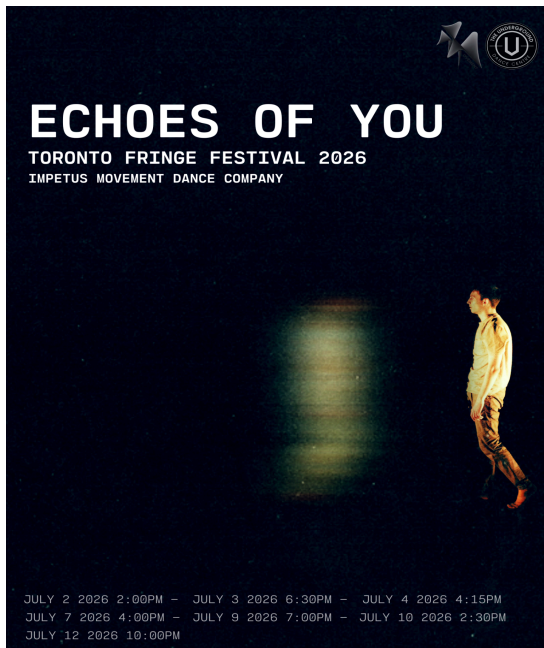


TORONTO
FRINGE
FESTIVAL

Echoes Of You Access Guide



June 30 - July 12, 2026

Soulpepper's Theatre Weyni Mengesha Theatre

This guide uses plain language to provide audiences, particularly neurodiverse audiences, with specific sensory details of programming in advance to help guide your experience.

Table of Contents

Access Measures	3
About Echoes Of You	5
Run Time	5
Content Warnings and Advisories	5
Cast and Characters	6
Cast and Characters	7
Costumes	8
Get in Touch	9

Access Measures

Pre/Show Audio Described Performance

Prior to the performance, audience members will receive pre-show audio notes. These notes will provide an overview of the storyline and explain that this is a movement-based dance performance. They will also include descriptions of the dancers, including how many performers will be on stage and what their costumes will look like. As this production does not incorporate physical set pieces, audience members will also be informed that the stage will remain largely bare, allowing the focus to remain on the movement and performance itself.

The 2:30pm performance on July 10th 2026 will have Pre show Audio Notes.

About Echoes Of You

Echoes Of You is a contemporary dance work choreographed by Dawson Lloyd that explores the relationships within our lives and the lasting emotional echoes people leave behind. Through contemporary movement and human interaction, the work examines the complex emotions, experiences, and connections we build with one another while navigating the journey back toward our deepest selves. At its core, the piece reflects on the human instinct to conceal darker, heavier, and more vulnerable emotions such as fear, grief, loneliness, anger, insecurity, and shame in order to appear composed or acceptable to those around us. Beneath these carefully constructed layers, however, exists a profound desire to be understood, seen, and genuinely connected.

Run Time

53 minutes with no intermission

How To Experience

Not applicable to this production.

Content Warnings

Please be advised that Echoes Of You includes/mentions/references/depicts...

Not applicable to this production.

Sensory Warnings

Please be advised that Echoes Of You
includes/mentions/references/depicts...

The production features elevated auditory levels and vibrant stage illumination, including red and other colored lighting effects throughout. The work is presented as a continuous 55-minute performance without an intermission.

Cast and Characters



TYLER THOMSPON is a dancer performing in this production.



CHELLY LI is a dancer performing in this production.



DAWSON LLOYD is a dancer performing in this production.

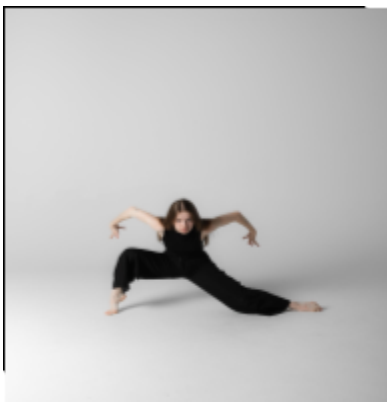
Cast and Characters



VALIEA PARRIS is a dancer performing in this production



ROSEMARY TRAITSES is a dancer performing in this production



DEJA SHUTURMA is a dancer performing in this production.

Costumes

The costume is a blue shirt and blue pants with black socks.

Get in Touch

If you have any questions or concerns about this access guide or planning your visit to SHOW NAME at the 2026 Toronto Fringe Festival, please reach out.

Contact Name Dawson Lloyd

Production/Choreographer/Company Director

Email: Dawson@impetusmovementdance.com

Phone: 647-3893330

If you want to tell the Fringe about your experience or have feedback that you would like to share, you can call, write, or send an email to the Fringe.

Our address is:

100 Broadview Avenue, Suite 300

Toronto, ON

M4M 3H3

Our email address is:

access@fringetoronto.com

Our phone number is:

416-966-1062

Thank you for coming to the 2026 Toronto Fringe Festival.