

TORONTO
FRINGE
FESTIVAL

Such Ado!
Access Guide



June 30 - July 12, 2026

Cake Cabaret

This guide uses plain language to provide audiences, particularly neurodiverse audiences, with specific sensory details of programming in advance to help guide your experience.

Table of Contents

Access Measures	4
About Such Ado!	5
Run Time	5
Content Warnings and Advisories	5
Cast, Characters, and Costumes	6-9
Set	10-11
Get in Touch	12

Access Measures

Relaxed Performance

Relaxed performances are open to everyone, but the environment has been specifically adapted for those who are neurodivergent and may experience sensory sensitivities, folks with communication or learning disabilities, and people who would benefit from a more relaxed environment.

All performances will be Relaxed Performances.

Touch Book

Touch books offer a tactile experience of various elements of the set, props, and costumes through touch. Touch books allow patrons from the blind and low vision community to enjoy a more complete experience of a show through touch.

A touch book will be available at the Front of House area for all performances.

Touch Tours

Touch tours are a chance for audience members to interact with the set, props, and costumes of the show. Touch tours are another opportunity for patrons to gain a more complete experience of the show through touch.

Touch tours will be offered on July 8th and July 10th at 5:15 and 5:30 each day.

About Such Ado!

Such Ado! is set in a Canadian University, in 2026, where the first-ever all-gender soccer team scores a lot more than just goals (if you know what we mean...). Taking its cue from Shakespeare's beloved comedy *Much Ado About Nothing*, this adaptation brings the heart of a classic script into the modern day and makes it—well—**gay**. Following a plot that deals with the trials and tribulations of young love alongside the world of semi-professional sports, *Such Ado!* expertly weaves some of Shakespeare's most popular characters into an inherently queer landscape through the use of contemporary language and pop-culture references.

Run Time

90 minutes with no intermission

Content Warnings and Advisories

Please be advised that *Such Ado!* Includes mature language and sexual content.

Cast and Characters



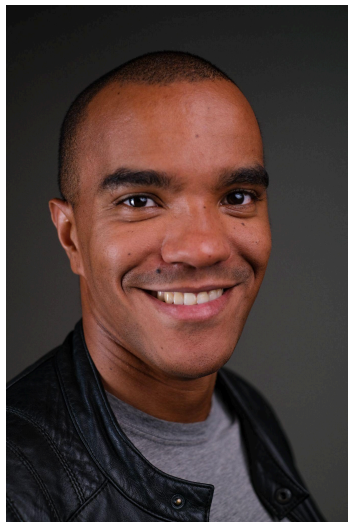
Demi-Lee Bainbridge plays the role of Connor and Ensemble. When Demi is playing Connor, she wears an orange hat. When she is playing Ensemble characters, she wears her hair in a ponytail.



Elise Bauman plays the role of Ben. Ben wears a half-mask to the masquerade ball. Later on, Ben dresses up as Oscar Wilde.



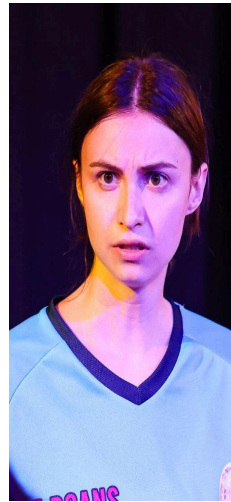
Frances Loiselle plays the role of Bea. Bea wears a half-mask to the masquerade ball. Later on, Bea dresses up as Joan of Arc.



Henrique Santsper plays the role of Donny P. Donny P wears a half-mask to the masquerade ball. Later on, Donny P dresses up as Abraham Lincoln.



Jillian Robinson plays the role of Lea.



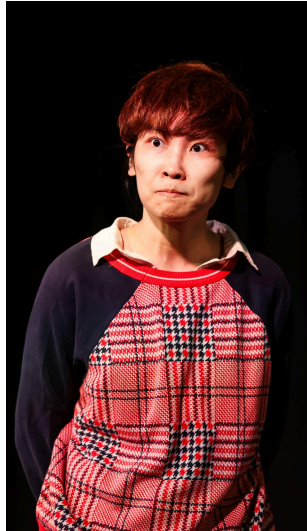
Keren Edelist plays the role of Claudia. Claudia wears a half-mask to the masquerade ball. Later on, Claudia dresses as Sue Gilbert.



Liam Kinahan plays the role of Jonathan. Jonathan wears a half-mask to the masquerade ball.



Naomi Morales plays the role of Hera. Hera wears a half-mask for the masquerade ball. Later on, Hera dresses up as Emily Dickinson.



Siyu Han plays the role of Boris and Ensemble. When Siyu is playing Boris, she wears a short, brown wig. When Siyu is playing Ensemble characters, she wears a black wig, styled in a bob with bangs.

Set



(An example of the set for Bea, Hera, and Lea's house)



(An example of the hospital set)

The stage is mostly bare. There is a black curtain along the back wall. The stage floor is wooden and there are two steps that go all around the stage; the actors sometimes sit on these steps.

Here are a few of the main settings throughout the show:

- Bea, Hera, and Lea's house: signified by a bench and a table

- Jonathan, Boris, and Connor's apartment: signified by one or two chairs
- Outside on the soccer field: signified by no furniture onstage
- Inside the locker room: signified by a table
- The library: signified by a table with two chairs behind it
- The hospital: signified by two blocks and a chair, made to look like a bed

Get in Touch

If you have any questions or concerns about this access guide or planning your visit to SHOW NAME at the 2026 Toronto Fringe Festival, please reach out.

Emily Elizabeth

Co-producer/director

em.elizabeth.artist@gmail.com

If you want to tell the Fringe about your experience or have feedback that you would like to share, you can call, write, or send an email to the Fringe.

Our address is:

100 Broadview Avenue, Suite 300

Toronto, ON

M4M 3H3

Our email address is:

access@fringetoronto.com

Our phone number is:

416-966-1062

Thank you for coming to the 2026 Toronto Fringe Festival.